



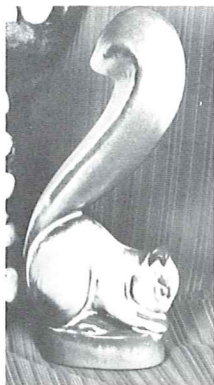
fine ceramic sculpture for today's home

REPRODUCTIONS OF WILLARD STONE'S
WOOD CARVINGS

These pieces available
ONLY in:
Rubbed Bisque

Today's homes are "confines around our treasures", no matter what they "cost". Only a few can afford the "originals" of masters, but even the meagerest of homes are entitled to be enriched by living with good reproductions of them. All of the originals of the items we reproduce, are owned by Frankoma.

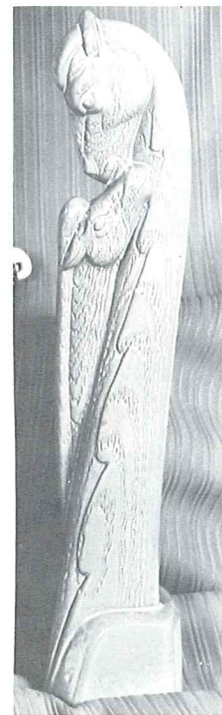
The wood sculpture of **WILLARD STONE**, a Cherokee, is a part of most museums, especially of the Southwest. His unique down to earth and humanistic style has brought him into many of the leading art galleries in America. We try to faithfully reproduce the few we are privileged to own.



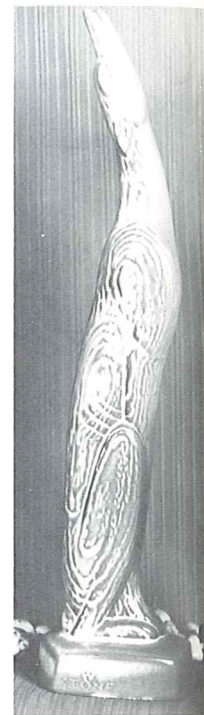
SQUIRREL — #105
6" Tall — 4.00



INDIAN MAIDEN — #101
12" Tall — 7.50

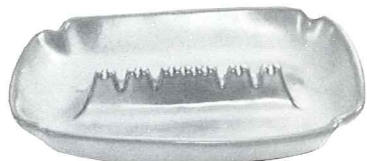


MARE AND COLT — #103
12" Tall — 7.50

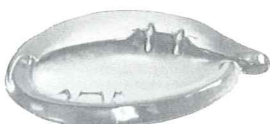


COYOTE — #102
12½" Tall — 7.50

ASH TRAYS AND ACCESSORIES



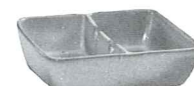
489—10" Ash Tray with Safety Rest—5.00



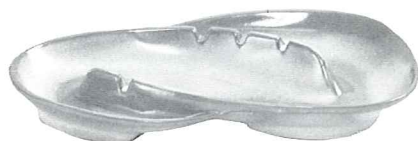
452—7" FREEFORM—3.00



453—7" ARROWHEAD—3.00



469—4½" SAFETY ASH TRAY—2.00



F203—13½" TEAR DROP—5.00



490—7" SAFETY ASH TRAY W/ CORK CENTER FOR PIPES—4.00



458—7" THREE SIDED—4.00



474—4" ROUND ASH TRAY—2.00

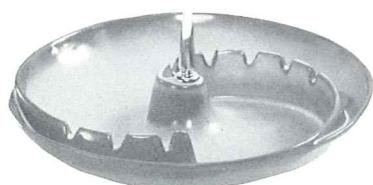


513—4" Clover—1.50



477—4" Dogwood—1.50

MINIATURES:
APPROPRIATE FOR PIN
TRAYS: NUT CUPS: ASH
TRAYS: etc.



30—10" ROUND ASH TRAY—6.00



463—4" Arrowhead—1.50



512—4" Leaf—1.50



170—TURTLE PAPER WEIGHT—1.50

SIZES ARE PROPORTIONATE BUT MAY VARY SLIGHTLY

ABOVE ITEMS AVAILABLE IN ALL COLORS — ADD 50% FOR FLAME